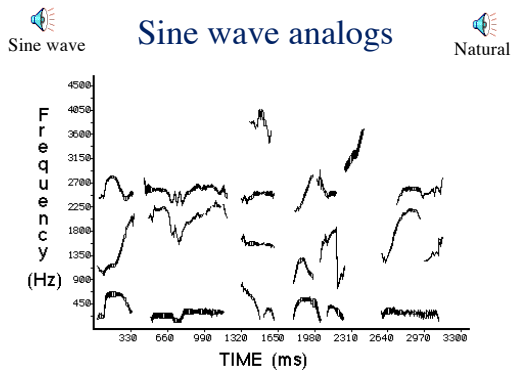


Bottom up vs. Top Down

- Bottom-up processing
- Top-down processing

Modularity and Special-ness

- Jerry Fodor: perceptual systems & language are modular
- To what extent is the processing system that we use for speech or language unique and special? Or does it overlap with other types of processing?
- Evidence sources:
 - Do animals perceive speech the way we do?
 - Do we process nonspeech sounds differently than speech?



Innate vs. Learned

- Are we innately programmed to learn language?
- Or is language learned?

Multiple activation/serial vs. parallel

- To what extent are multiple things processed at the same time?
- Is processing serial or parallel?

Automatic vs. controlled processes

- Controlled processes require substantial cognitive resources.
- Automatic processes do not.

Example - try and read the colors of the ink

- red
- yellow
- green
- blue
- red
- blue
- yellow
- green
- blue
- red

Example - try and read the colors of the ink

- red
- yellow
- green
- blue
- red
- blue
- yellow
- green
- blue
- red

Reading single words for most of us is automatic, so even when we try and ignore it, we can't help but be influenced by it. To test yourself on this, go to www.dcity.org/braingames/stroop/.
